

Get ready for a break



  
**Fresco**  
NirvanaCountry  
GURGAON

## FRESCO AT NIRVANA COUNTRY



Right in the heart of Nirvana Country, lies Fresco. A new & modern residential community designed as a nurturing refuge from the bustle of the city. A refreshing oasis where residents enjoy peace of mind, comfort of home and pastoral gardens. Fresco, conceived and designed by Callison Inc. USA, is a high rise project which fully equipped. Welcome to Fresco at Nirvan Country!

### Features

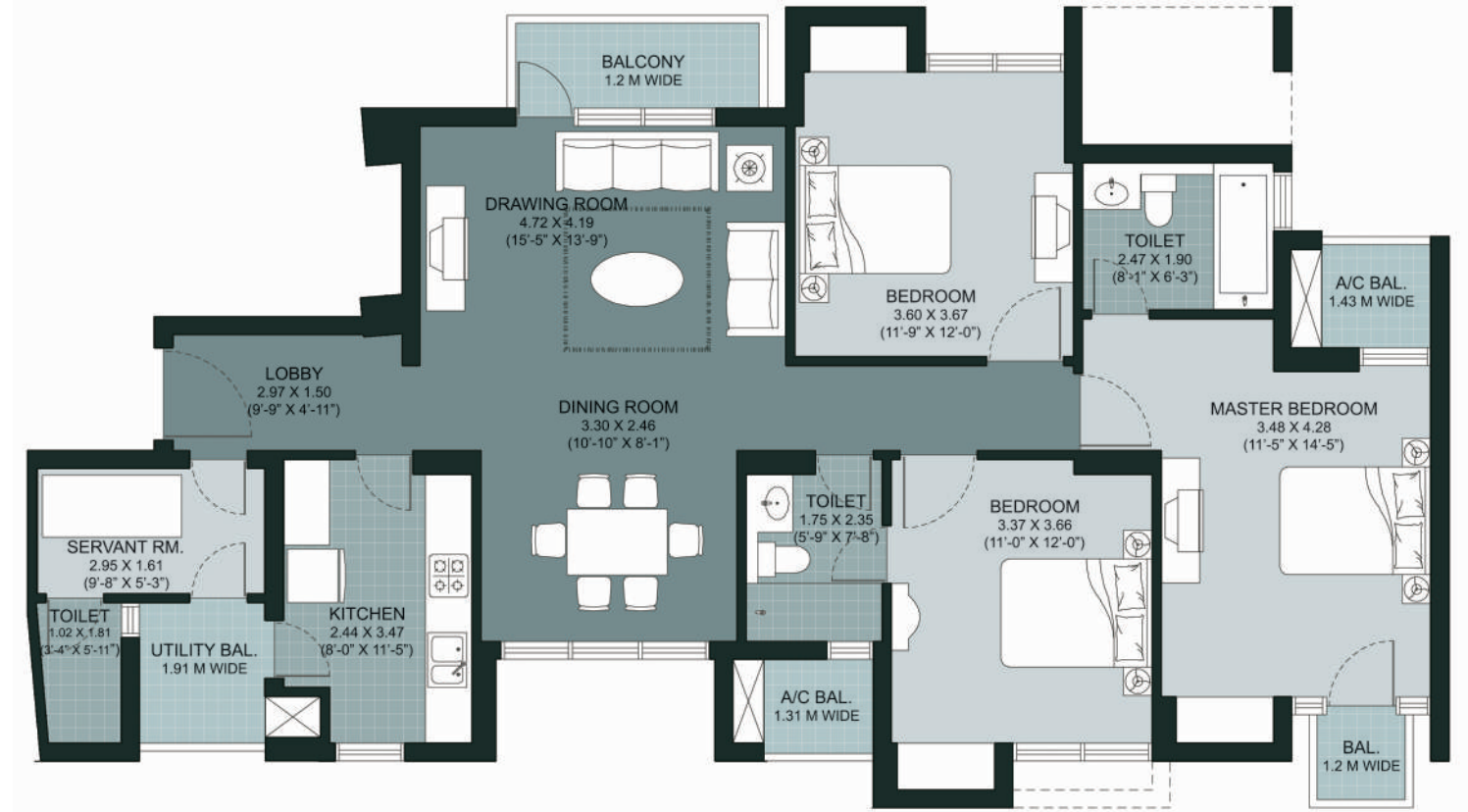
- Fully fitted modular kitchen with refrigerator, oven, hob and chimney
- Apartments with 100% power back-up
- Indoor games room, activity room, media room and a multipurpose hall
- Ultra-modern health club with swimming pool
- Squash court and tennis court
- Convenience stores in the vicinity

### PROJECT DETAILS

Area in acres	:	16.9
No. of Units	:	798
Max. Height	:	Ground + 18
Type	:	2 and 3 bedroom apartments
Size	:	1336 sq. ft. - 1877 sq. ft.
Architects	:	Callison Inc., USA

## FLOOR PLAN

Type : W3 - 3B2TIS  
Area : 1815 sq. ft. (168.60 sq. mt.)



Other apartment options available:

Type W1 - 3B3TIS	1877 sq. ft. (174.42 sq. mt.)	Type W4 - 3B2TOS	1629 sq. ft. (151.29 sq. mt.)	Type W5 - 2B2TOS + Terrace	1336 sq. ft. (124.09 sq. mt.)
Type W6 - 2B2TOS	1336 sq. ft. (124.09 sq. mt.)	Type T1 - 3B3TOS (Tail)	1794 sq. ft. (166.66 sq. mt.)	Type T2 - 2B2TOS (Tail)	1418 sq. ft. (131.74 sq. mt.)

## MASTER PLAN



## PROJECT SPECIFICATIONS

Wall finish	Internal External Servant Room	Bedroom: Acrylic emulsion paint Combination of stone and textured paint Oil bound distemper
Flooring	Living / Dining Bed Rooms Servant Room	Imported marble Laminated wood flooring Ceramic tiles
Kitchen	Flooring Dado Platform	Fully fitted modular kitchen with refrigerator, hob, chimney & oven Ceramic tiles Ceramic tiles 600mm above counter and upto 1500mm above floor on non counter wall Granite counter with twin bowl stainless steel sink with drain board
Toilets	Flooring Dado Platform	Granite / Ceramic tiles Selected ceramic tiles upto ceiling Granite / marble counter, white ceramic fixtures & single level CP fittings, geysers. Bath tub in master bedroom, shower stall in other toilets
Doors	Internal	Seasoned hardwood frames with European style moulded shutter
Doors & Windows		Powder coated / Anodized aluminum
Electrical		Copper wiring for all light & power points with MCBs
Building		Sufficient car parking facility per apartment, earthquake resistant RCC framed construction with infill brick walls
Security		Door phone
Power back-up		100%

All floor plans, sitemap, specifications, amenities, facilities and perspective views are tentative in nature and are subject to revision.

# LOCATION MAP



## THE PROMOTERS



Unitech is one of India's leading real estate developers reputed for its fine design & construction. Its corporate philosophy is built on trust and commitment. Since its inception in 1972, Unitech Ltd. has come a long way turning many a barren land into landmarks. The first winner of the ISO 9001:2000 certification in north India, Unitech has created cutting edge residential complexes.

Unitech's efforts in establishing world-class standards and quality in real estate development have been highly appreciated. Spreading its wings across the nation, Unitech has made its presence felt in Delhi, Gurgaon, NOIDA and Greater Noida, Bangaluru, Kolkata, Lucknow, Mumbai, Chennai, Varanasi, Hyderabad, Mohali and Agra.



A part of the Kolkata based Perival Group, Pioneer Urban Land & Infrastructure Ltd. develops both residential and commercial complexes. Today it is the name behind some of the most successful real estate projects in the NCR.

Unitech Ltd. & Pioneer Urban Land & Infrastructure Ltd. have together brought some marvelous residential projects in NCR, like Vista Villas, Greenwood City, South City-II & Nirvana Country.

unitech<sup>®</sup>

